



Ferroguard Assure MRI Safety Manager™ Connection Guide

Version 5.0 | 2023

Table of Contents

- MRI Safety Manager™ in Metrasens Safety Suite 5
- Step by step connection guide 5
- CONFIGURE WI-FI** **5**

Foreword

The equipment described in this guide is subject to continuous development and improvement. Consequently, there may be minor variations in specifications, facilities or operation that are not covered in this guide.

Every effort has been made to ensure that the information provided in this guide is accurate at the time of going to print. If any errors or omissions are noticed, please notify Metrasens Ltd.

The equipment must be operated and maintained only by suitably trained and qualified personnel.

Copyright

© 2023 Metrasens Ltd. All rights reserved.

No part of this publication may be reproduced, transmitted, stored in a retrieval system, or translated into any language in any form by any means without the prior permission of Metrasens Ltd.

Trademarks

All trademarks used in this document are acknowledged as belonging to their respective companies.

Manufacturer

Metrasens Ltd

8 Beauchamp Business Centre

Sparrowhawk Close

Malvern

WR14 1GL

United Kingdom

Contact details

You can contact the Metrasens team for assistance, including technical support, service or sales:

International +44 (0) 1684 219000

support@metrasens.com

North America +1 (630) 541-6509

Extn. 110 or 146

Our web address is: www.metrasens.com

Patents

Metrasens screening technology used in Ferroguard® Assure is protected by the following patents and patent applications: US 7113092, GB 2395276, ZA 2005/03561, JP 4477503, IL 168467, US 2013-0307533 A1, WO 2013/171498 A2, and Euro Pat App 2 850 462 with other US and international patents pending.

About this guide

This guide describes the setup of the MRI Safety Manager™. It provides detailed information on the following tasks:

- connecting MRI Safety Manager™ to the Metrasens Safety Suite data server.

It is intended for use by all technical personnel and suitably trained operators who install and operate the system.

Document version: v5.0

Part No. 2530.

Original language

English is the original language of this guide. If you are reading a translated version of this guide and have a question about the intended meaning of any translated text, always consult the original English-language guide. If you do not have a copy, please request a copy directly from Metrasens.

MRI Safety Manager™ in Metrasens Safety Suite



MRI Safety Manager™ gathers anonymous statistical data about the usage of your MRI Zone-IV entryway, which will help you monitor and improve safety in your MRI department.

MRI Safety Manager™ periodically sends the data to your Facility account in Metrasens Safety Suite. You can view the data from all your protected entryways in the My MRI Safety app (available on Google Play Store).

To profit from these features, MRI Safety Manager™ must be connected to the Metrasens Safety Suite data server via Wi-Fi and the internet.

Contact your Metrasens Customer Service Manager if you need help with your MRI Safety Manager™.

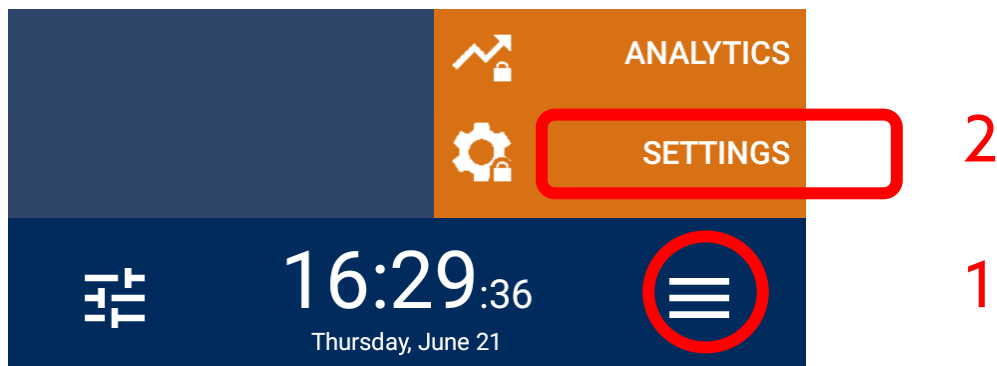
Step by step connection guide

CONFIGURE WI-FI

MRI Safety Manager™ requires a permanent connection to the internet via a suitable Wi-Fi access point. (The data transfer rate is very low: a few bytes per hour.)

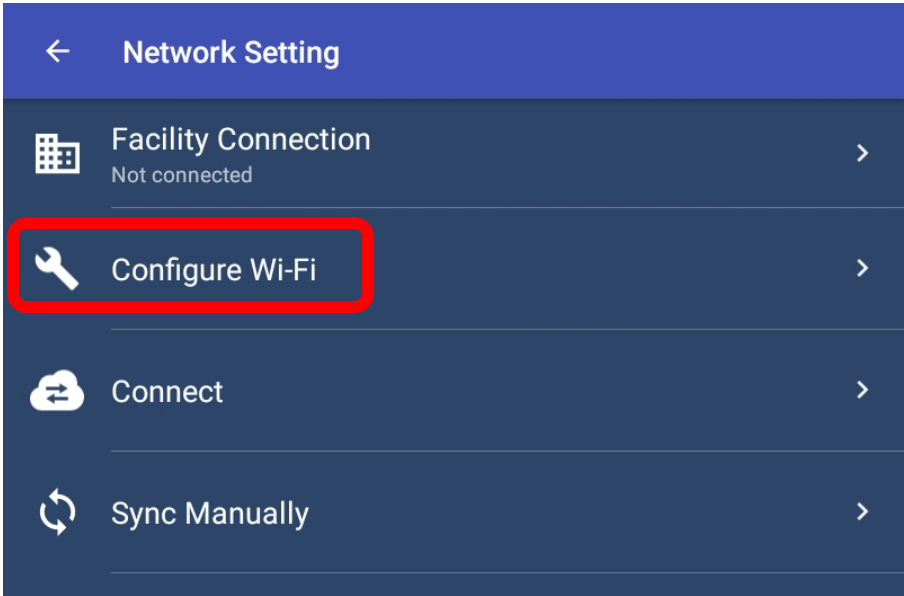
Follow these simple steps to connect MRI Safety Manager™ to the internet, via a Wi-Fi network.

You will need the security pass code for the MRI Safety Manager™, plus the Wi-Fi password for the Wi-Fi network you are connecting to.



3 Enter 4-digit MRI Safety Manager™ pass code

4



On

5

NetworkName

6



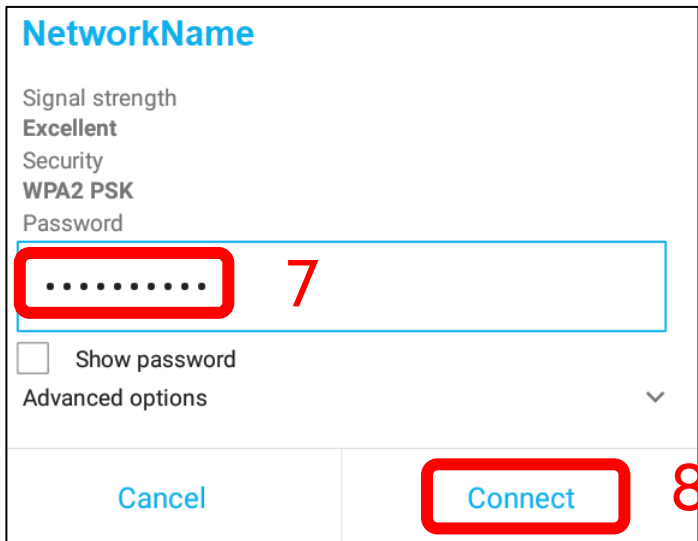
.....

7

Cancel

Connect

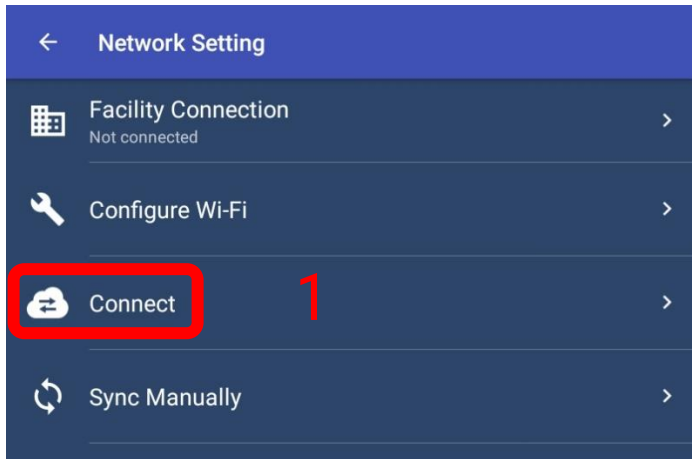
8



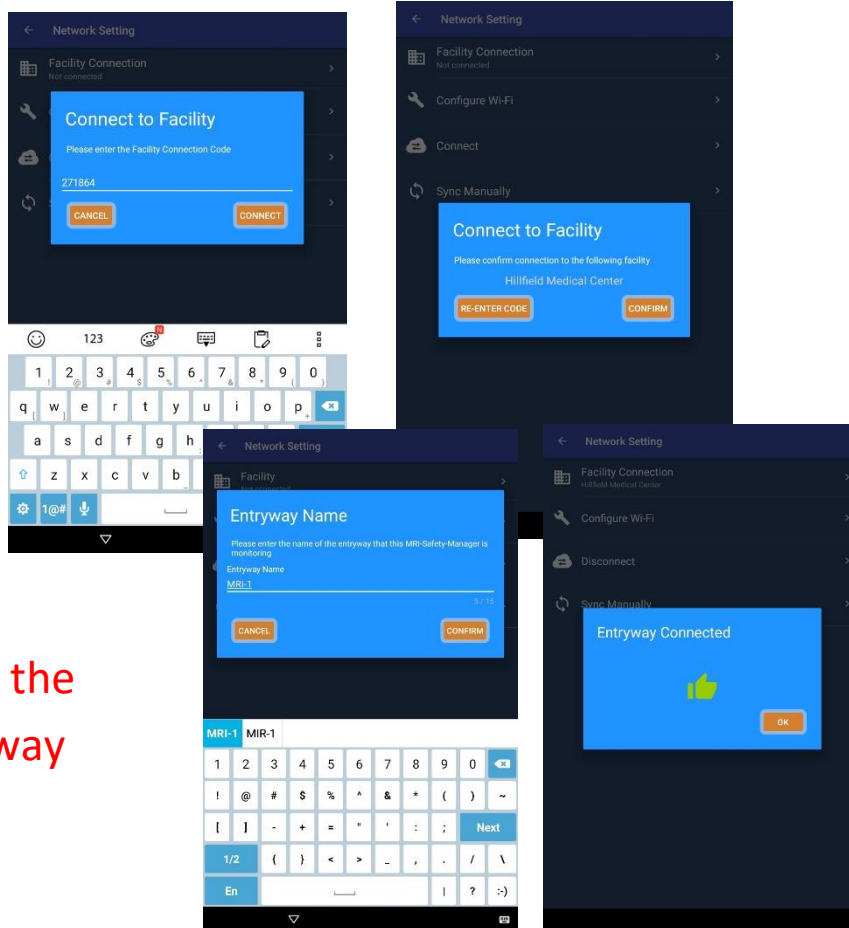
2 Connect MRI-Safety-Manager™ to Facility Account

You will need the facility connection code that is shown in your online account at <https://mri.metrasens.com>.

When connected, provide a name for the protected entryway.



Enter connection code, confirm Facility name...



Name the entryway

